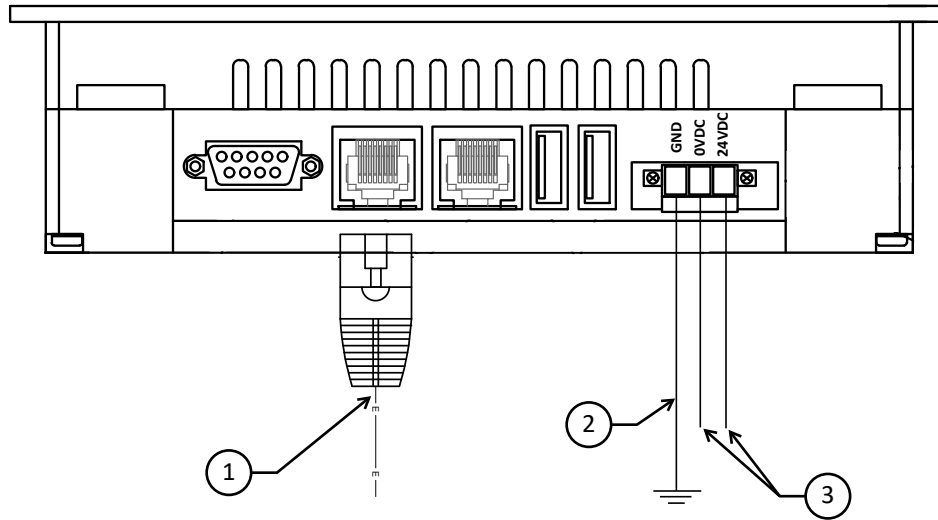


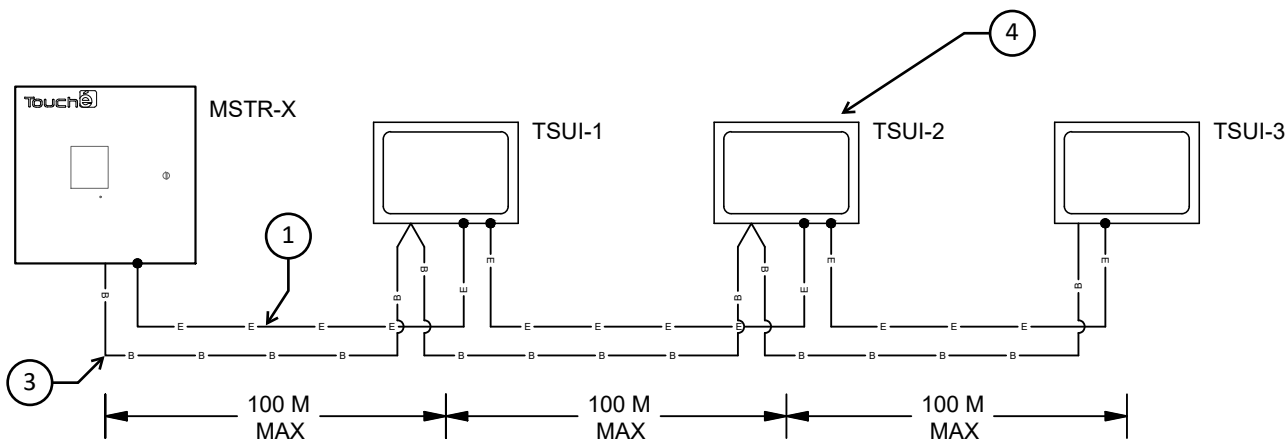
BOTTOM OF TSUI



TIPS / NOTES

1. TOUCHÉ éNET - MINIMUM CAT 5 CABLE - ENSURE CABLES ARE PLUGGED INTO éNET PORT OF MASTER INTERFACE - DO NOT CONNECT TO BRANCH PORT
2. ENCLOSURE BACK BOX (EQUIP. GROUND)
3. POWER INPUT WIRING - MINIMUM 16/2 - CONNECT TO MASTER INTERFACE POWER OUTPUT - ENSURE POLARITY IS CORRECT
4. MAXIMUM OF (3) TSUI'S PER POWER SUPPLY.

MULTIPLE TSUI RISER DIAGRAM



CONNECTIVITY DIAGRAM

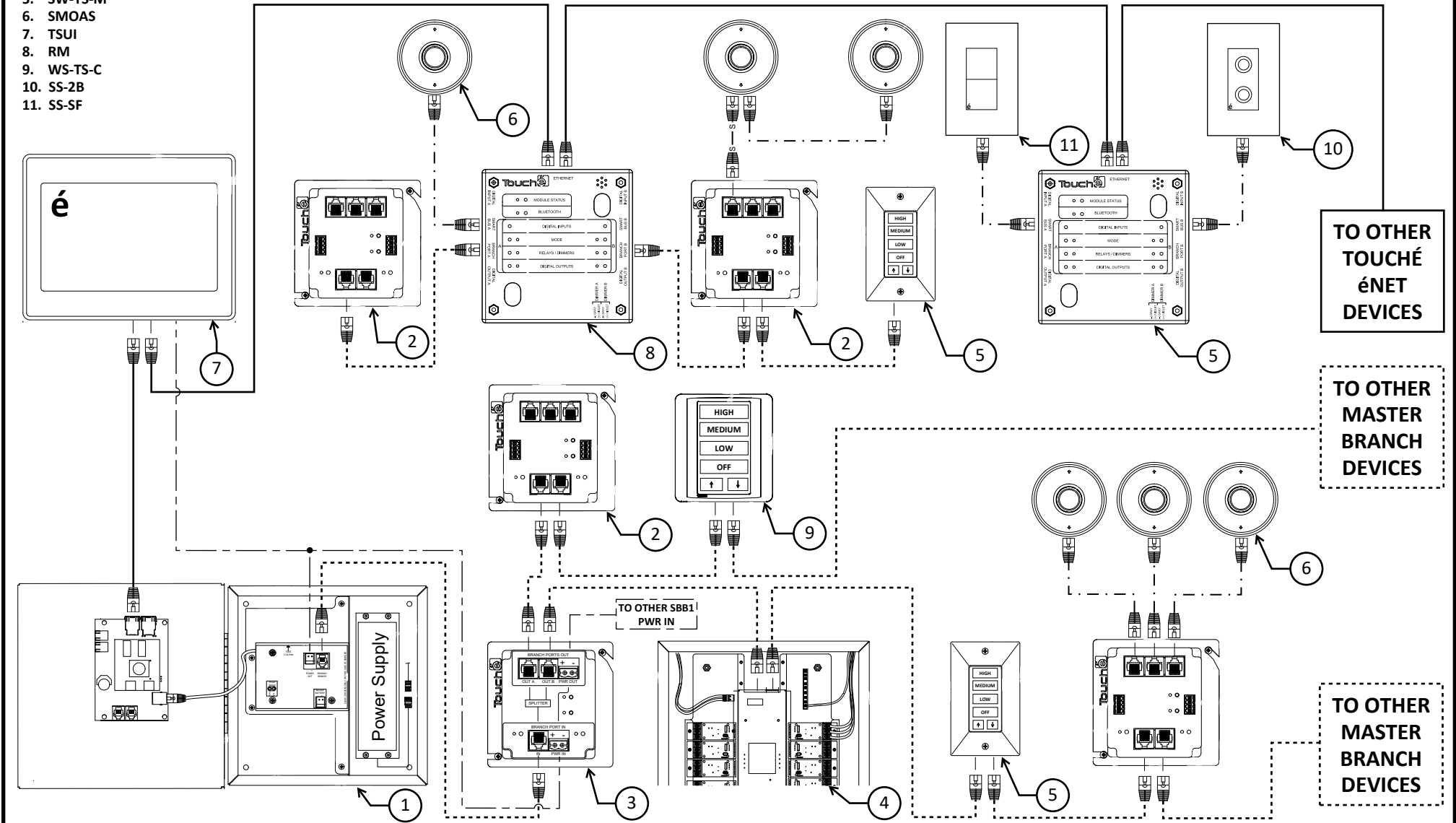
COMPONENT LIST

1. MSTR-DVOLT-2 (DOOR OPEN)
2. SBB1
3. LRM OR LIM
4. RD PANEL
5. SW-TS-M
6. SMOAS
7. TSUI
8. RM
9. WS-TS-C
10. SS-2B
11. SS-SF

CABLE LEGEND

- = éNET (CAT5)
- - - - - = BRANCH NETWORK (CAT 5)
- · - · - = SMART NETWORK (CAT 5)
- = 16/2 POWER CABLE

NOTE: ALL COMPONENTS MAY NOT BE PRESENT. DIAGRAM IS ONLY INTENDED TO SHOW CONNECTION POINTS BETWEEN COMPONENTS



CLEANING INSTRUCTIONS

ALWAYS

- USE ONLY TOUCHSCREEN SAFE CLEANER AND MICROFIBER CLOTH
- DAMPEN THE CLEAN MICROFIBER CLOTH AND WIPE SWITCH
- WIPE THE SWITCH DRY WITH A CLEAN MICROFIBER CLOTH

NEVER

- USE GLASS CLEANER
- SPRAY SWITCH DIRECTLY WITH CLEANER
- USE PAPER TOWELS



FAILURE TO FOLLOW THESE INSTRUCTIONS WILL DAMAGE THE SWITCH AND VOID THE PRODUCT WARRANTY