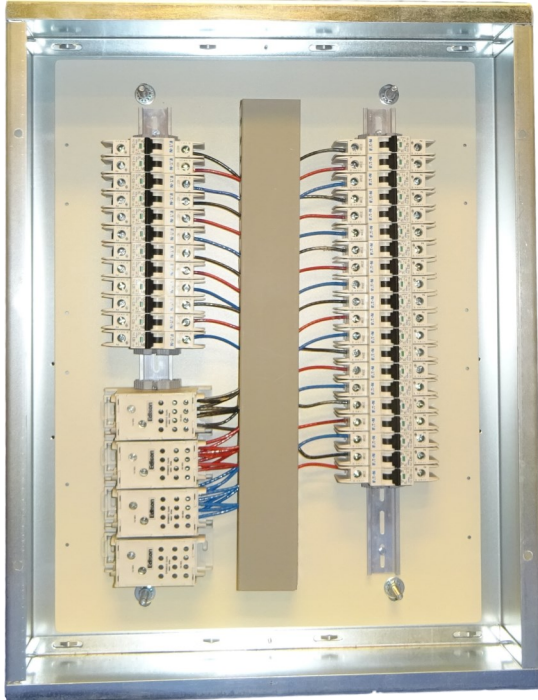


PRODUCT DATA SHEET

TOUCHÉ CONTROLS



MAIN-LUG ONLY PANEL



PANEL SHOWN WITH COVER REMOVED
(BRANCH CIRCUIT BREAKERS SOLD SEPERATELY)

DESCRIPTION

Main Lug Only Panels (MLOP) are designed to be used with RD panels to add branch circuit breaker protection to the RD panel. This provides the RD panel with feed-through construction to be fed by a single 3 phase source (up to 250A).

FEATURES

- Up to (32) 20A/1P circuit breakers can be installed in this panel.
- Panel is rated 277/480V, 3-phase, 4-wire.
- The back panel and covers are all rugged, powder coated, steel for long life durability. The backbox is galvanized steel.
- The enclosure is designed to be dimensionally compatible with typical commercial circuit breaker panels (26" high x 20" wide x 5.75" deep). The panel can be mounted above, below or beside the associated RD panel - this allows for a more coordinated overall electrical installation.



BRANCH CIRCUIT BREAKERS
20A, 120 / 277VAC
SWITCHING DUTY RATED
SOLD SEPERATELY

Touché Controls (a Product of ESI Ventures)

A: 2085 Humphrey Street, Fort Wayne, IN 46803

T: 888-841-4356

W: www.ToucheControls.com

SPECIFICATIONS

VOLTAGE	120 OR 277VAC (ALL CIRCUIT BREAKERS MUST SHARE A COMMON VOLTAGE)
LISTINGS	CIRCUIT BREAKERS LISTED UNDER UL489
AMBIENT TEMPERATURE	40C (104F)
MAXIMUM HUMIDITY	5 - 85%, NON-CONDENSING
ENCLOSURE—BACKBOX	GALVANIZED STEEL
ENCLOSURE—INTERIOR / COVER	NEMA 1, POWDER COATED STEEL

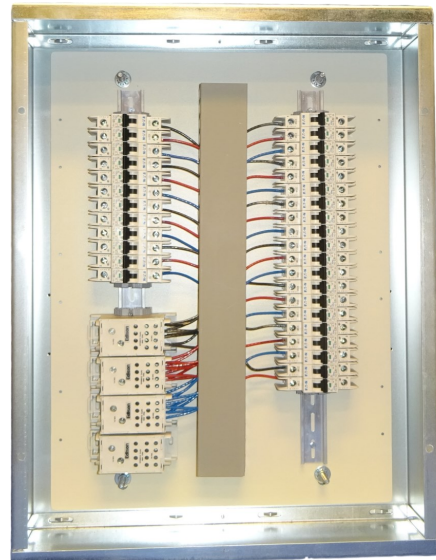
CATALOGUE NUMBER

DEVICE TYPE

MLOP Main Lug Only Panel



EXTERIOR VIEW



INTERIOR VIEW

Touché Controls (a Product of ESI Ventures)

A: 2085 Humphrey Street, Fort Wayne, IN 46803

T: 888-841-4356

W: www.ToucheControls.com