

PRODUCT DATA SHEET

TOUCHÉ CONTROLS



ETHERNET ROUTER



EXTERIOR
NEMA 12 ENCLOSURE



INTERIOR VIEW
SHOWN WITH BACNET OPTION

DESCRIPTION

Touché's Ethernet Router provides a simple and single point connection between a customer's Ethernet network and Touché's Ethernet (éNet) network. Network isolation is provided with this router, allowing each network to be configured independently including IP addressing and traffic management. The BACnet option allows BACnet commands to pass between networks.

FEATURES

- Single point connection between customer's Ethernet network and the Touché Ethernet (éNet) network minimizing security risks and isolating traffic of the interconnected systems.
- Isolation of IP addressing allows networks to be set up independently, requiring only one IP address to be provided for the lighting control system.
- Utilizes a stateful firewall that acts on the structure of the message: who is initiating and who is responding. Originating requests from the LAN side and corresponding responses from the WAN side pass through the firewall. But traffic originating from the WAN side is blocked from the LAN side unless the firewall is adjusted to allow it. This protects the LAN side from unauthorized WAN access.
- BACnet option allows standard BACnet commands like "Who-Is" to pass through the router unobstructed.
- NEMA 12 enclosure allows the router to be installed in dirty environments without affecting unit performance.

Touché Controls (a Product of ESI Ventures)

A: 2085 Humphrey Street, Fort Wayne, IN 46803

T: 888-841-4356

W: ToucheControls.com

Doc: Rev1-1-22

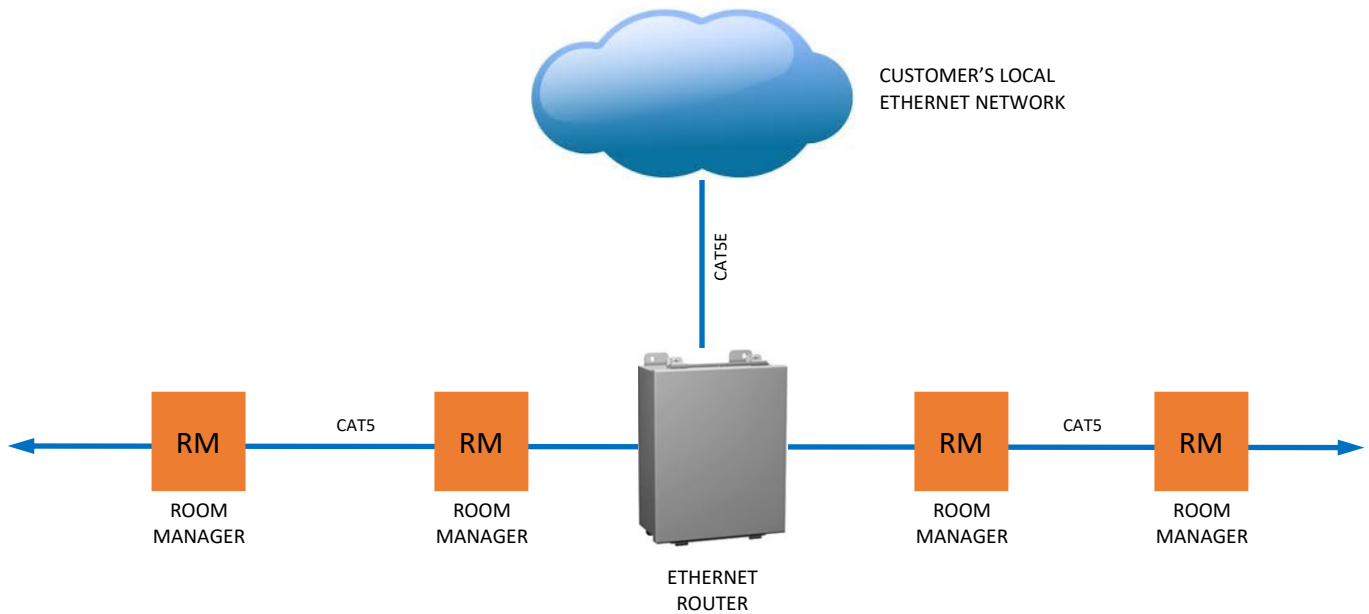
SPECIFICATIONS

VOLTAGE	100-240VAC (0.33A)
CONNECTIVITY	CAT5 (MINIMUM)
LISTINGS	UL508 (ROUTER, BACNET ROUTER, PWR SUPPLY)
AMBIENT TEMPERATURE	60C (140F)
MAXIMUM HUMIDITY	10 - 90%, NON-CONDENSING

CATALOGUE NUMBER

DEVICE TYPE	CONNECTIVITY	TRANSFER SPEED	SUPPLY VOLTAGE
ER Ethernet Router	[BLANK] Not BACnet Capable	10/100 10/100 Mbps	120 120VAC
	B BACnet Capable		

CONNECTIVITY



Touché Controls (a Product of ESI Ventures)

A: 2085 Humphrey Street, Fort Wayne, IN 46803 **T:** 888-841-4356

W: ToucheControls.com

Doc: Rev1-1-22